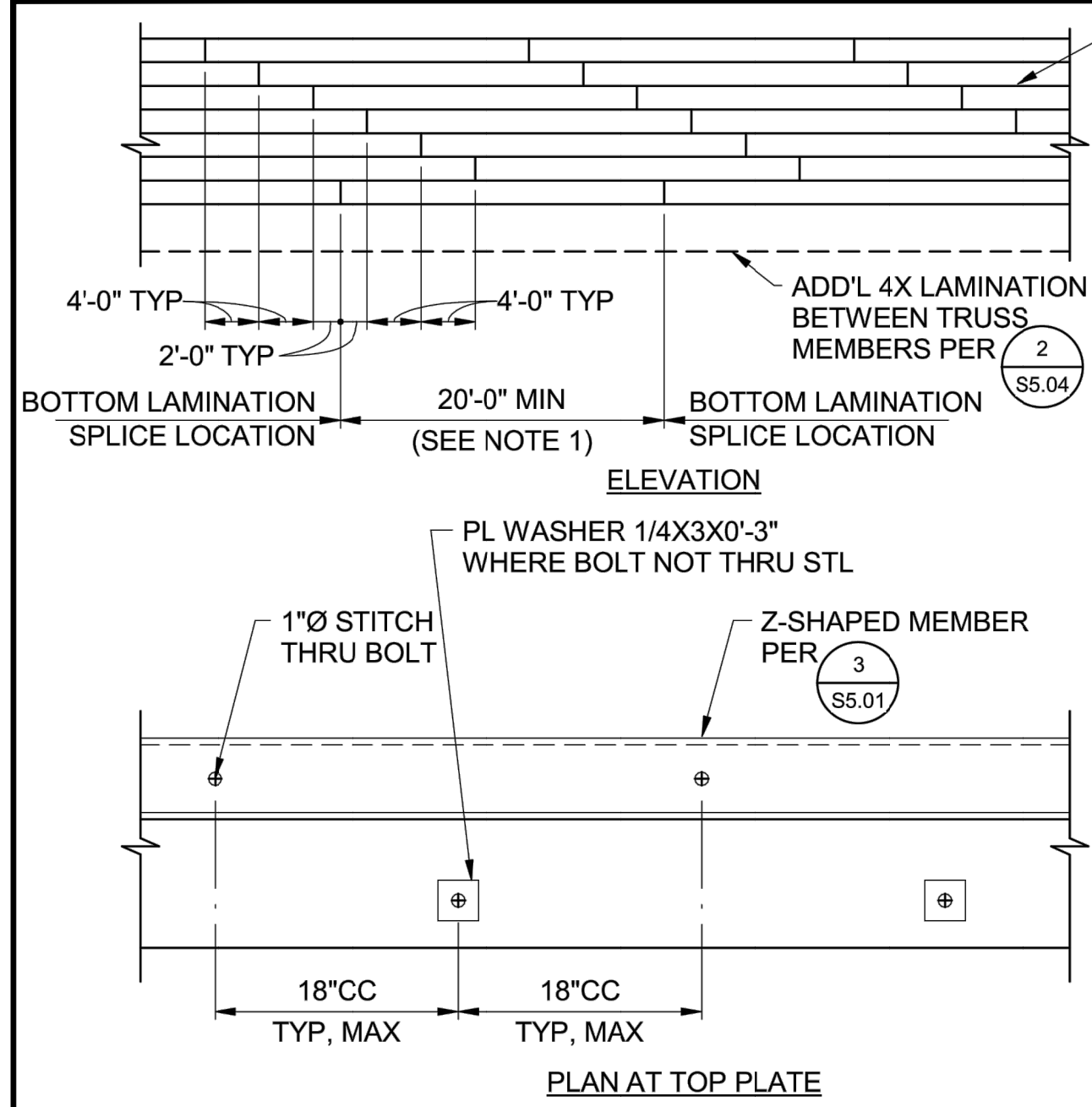
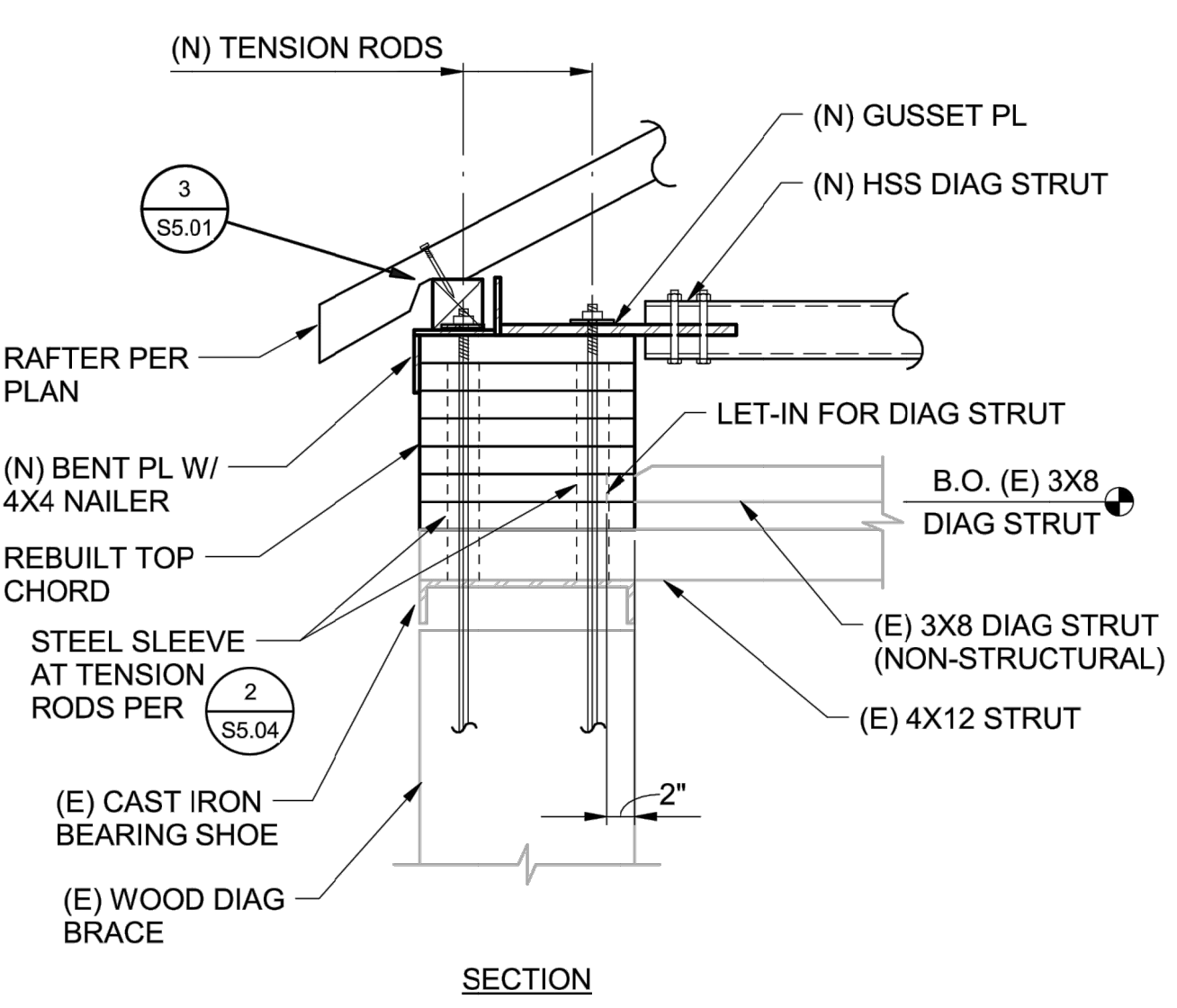


File: Q:\South\_Yuba\_River\_SP202193-Covered\_Bridge\_Stabilization\10\_Architectural\_Working\_Files\ArchDrawing\SS.01 DETAILS.dwg Layout: DETAILS Date: February 02 2018 - 3:14 pm User: GDELA

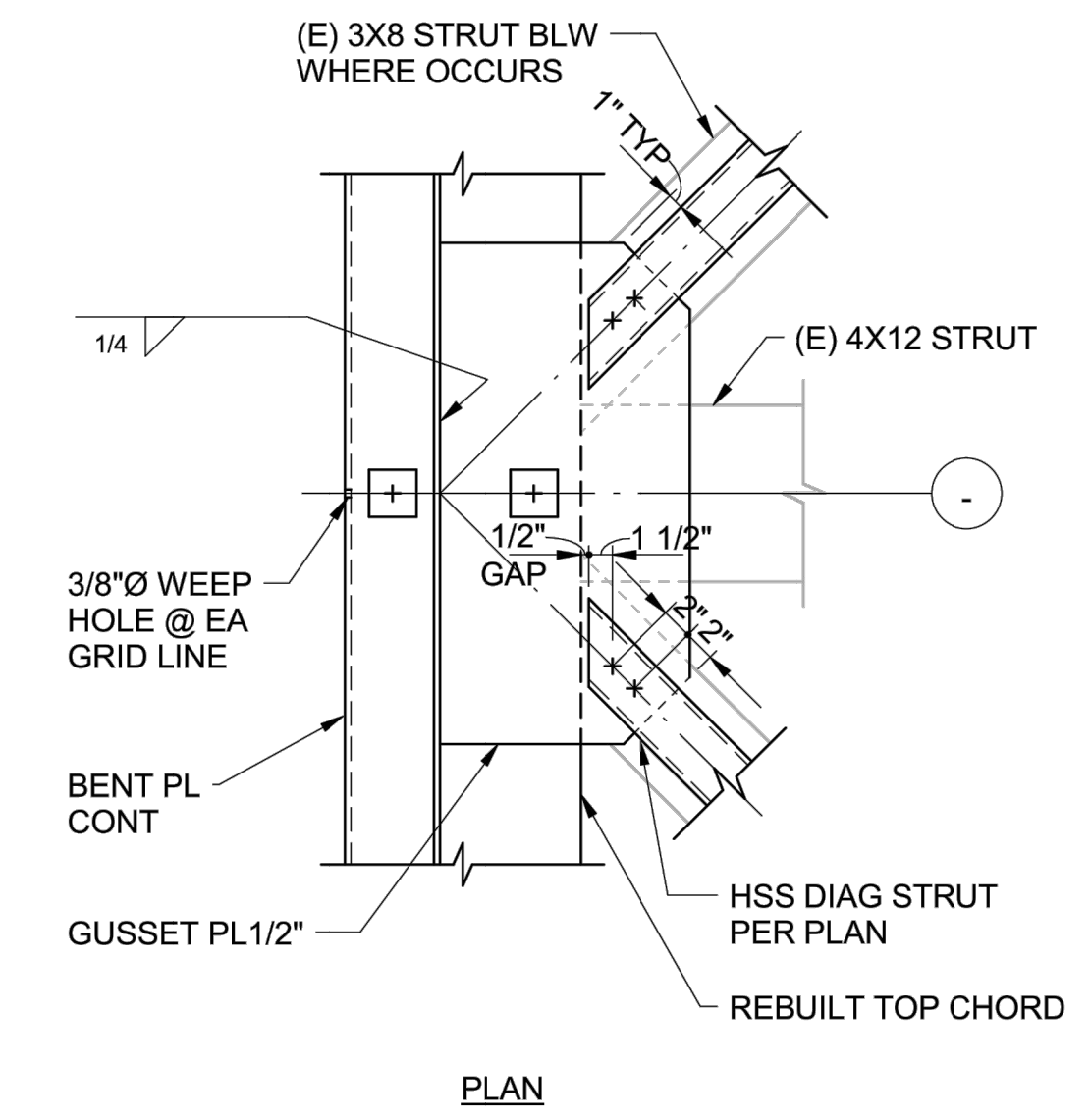


DETAIL 1 - NOT TO SCALE

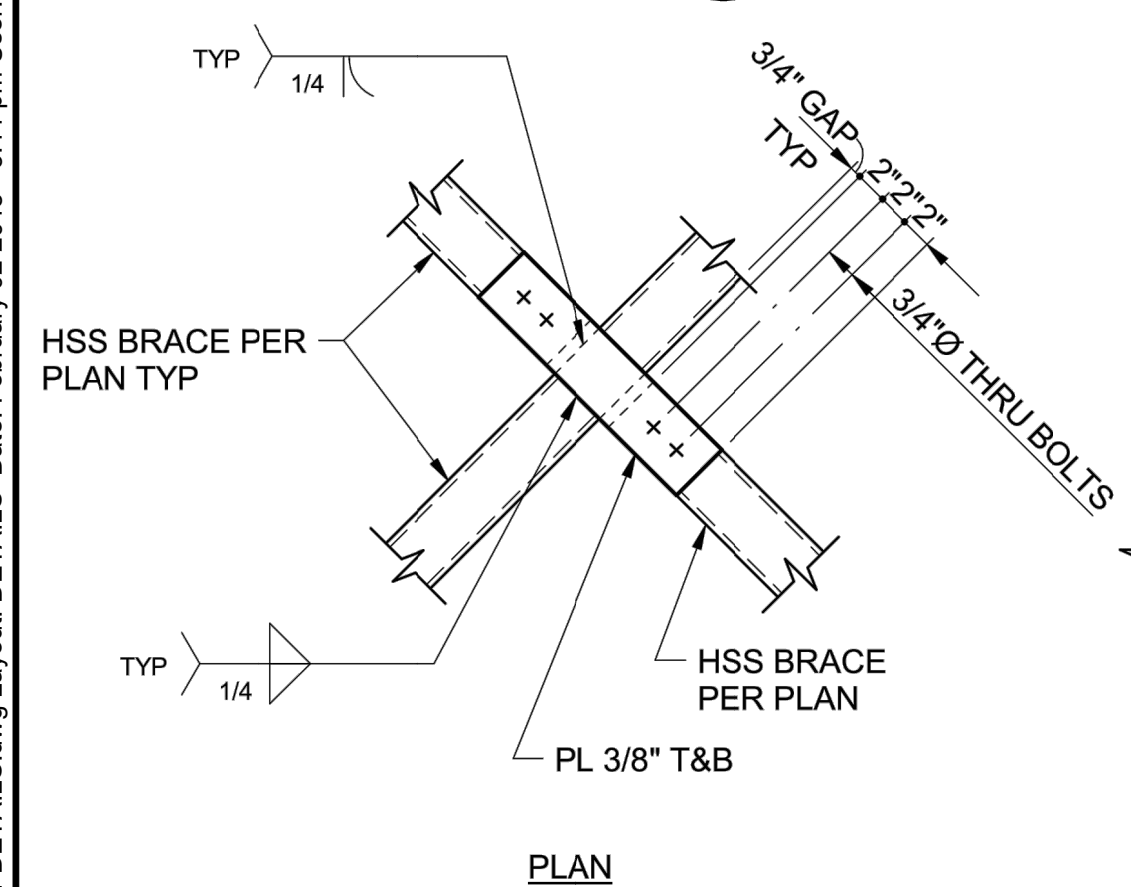
NOTES:  
 1. CONTRACTOR TO INVENTORY (E) TOP CHORD LAMINATIONS TO DETERMINE OPTIMUM LAMINATION LENGTH TO ALLOW FOR GREATEST USE OF (E) BOARDS.  
 2. GLUE EACH LAMINATION TOGETHER WITH SLOW SET CONSTRUCTION ADHESIVE. THE LAMINATION SHALL BE HELD STRAIGHT AND TRUE DURING CONSTRUCTION PROCESS. CONTRACTOR SHALL TAKE CARE TO BEGIN LAYUP WITH STRAIGHT AND TRUE BOARDS TO ENSURE PROPER STRAIGHTNESS AND TRUENESS IN COMPLETE LAMINATED TOP CHORDS. THE INITIAL THREE LAMINATIONS SHALL BE STRAIGHT AND TRUE AND BE ABLE TO FIT TOGETHER SNUGLY UNAIDED BY CLAMPS AND/OR SCREWS. INITIAL LAMINATIONS CAN BE USED TO BRACE LATER LAMINATIONS FOR STRAIGHTNESS. EXISTING BOARDS THAT ARE OUTSIDE OF ACCEPTABLE TOLERANCES SHALL NOT BE USED. SQUARE CUT END OF LAMINATION AND PLACE WITH SNUG FIT END TO END TO ENSURE PROPER END BEARING. PROVIDE STEEL SHIM PLATES OR EPOXY FILLER AS REQUIRED FOR SNUG FIT.  
 3. CONTRACTOR SHALL SUBMIT SHOP SHOP DRAWING FOR TOP CHORD ASSEMBLY SHOWING BOARD LENGTHS, APPROXIMATE NEW AND EXISTING LAMINATION LOCATIONS, AND ASSEMBLY SEQUENCE AND METHOD.



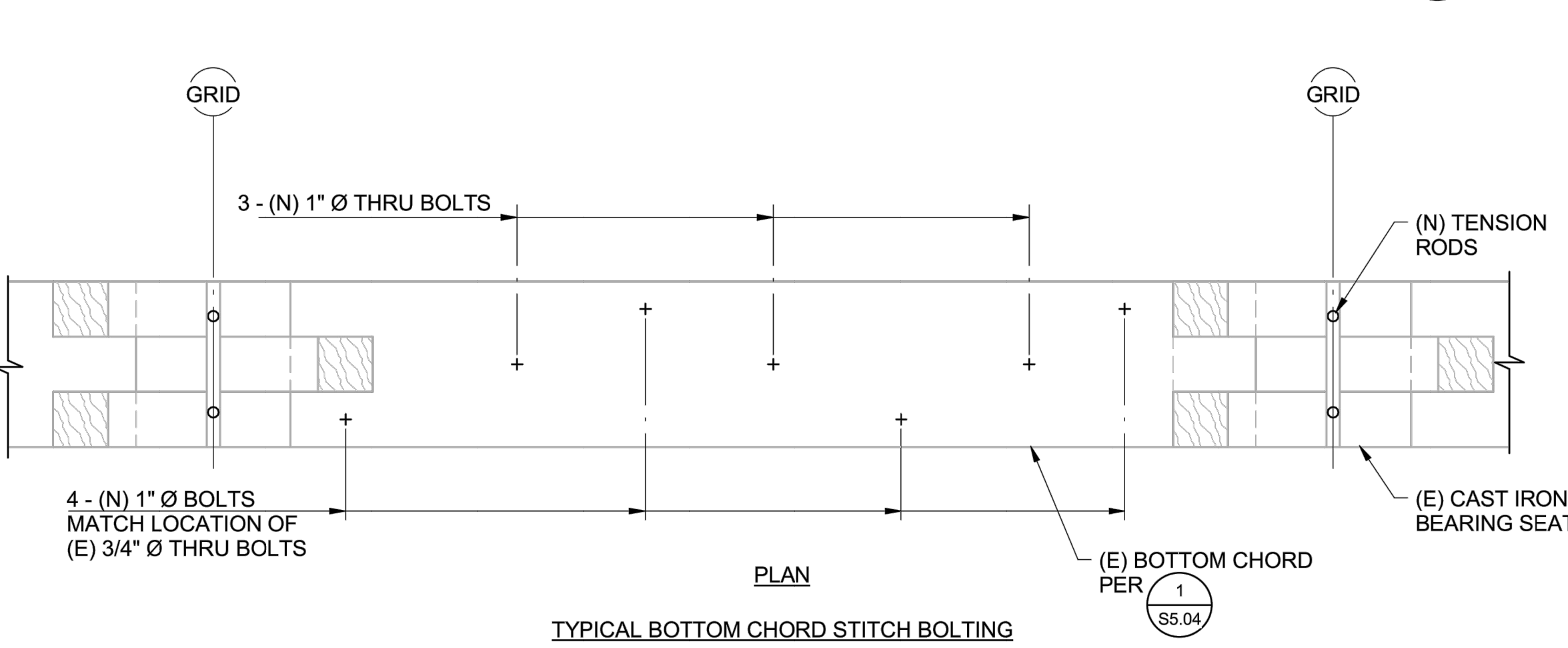
DETAIL 2 - 1" = 1'-0"



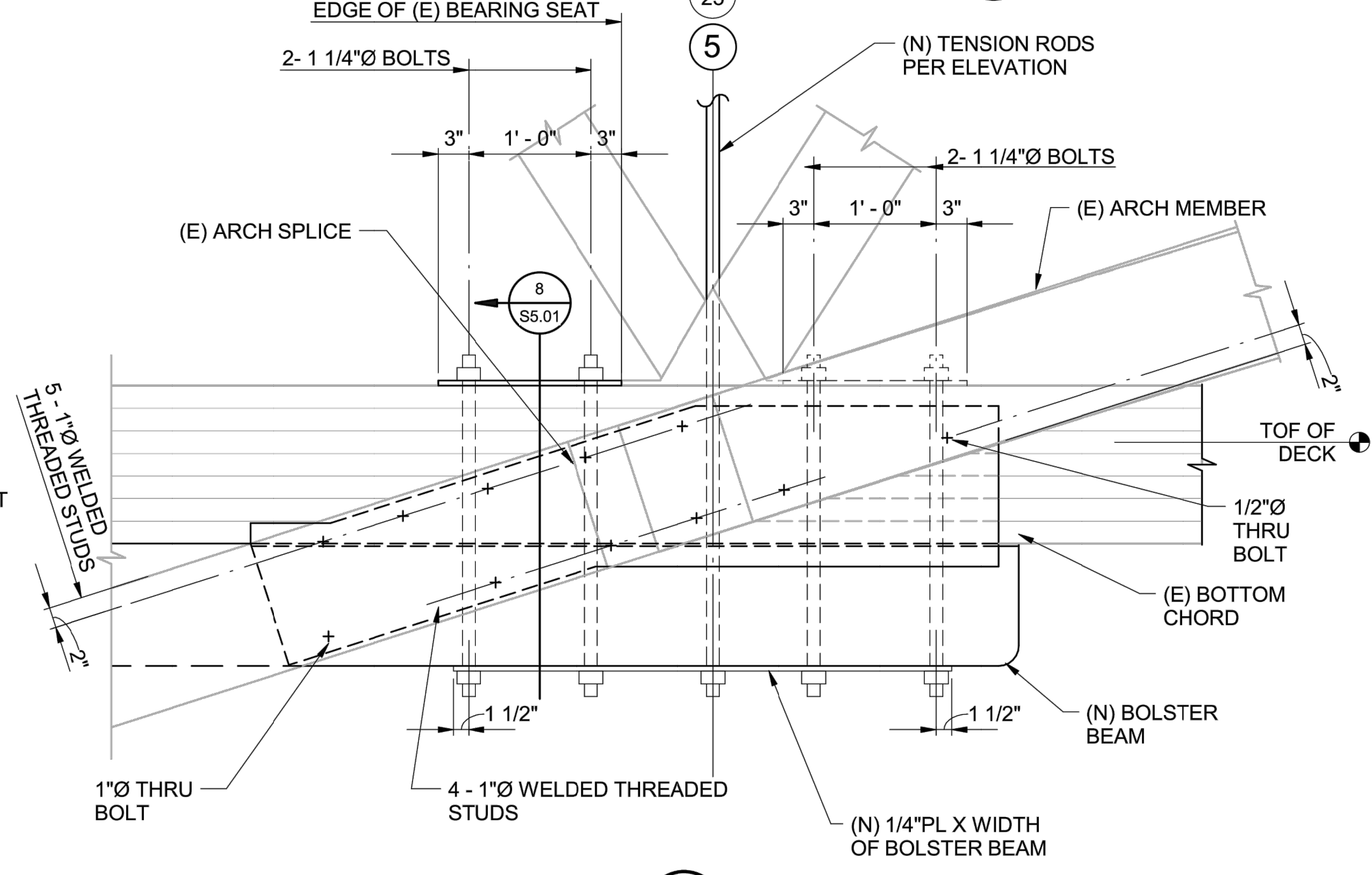
DETAIL 3 - 1" = 1'-0"



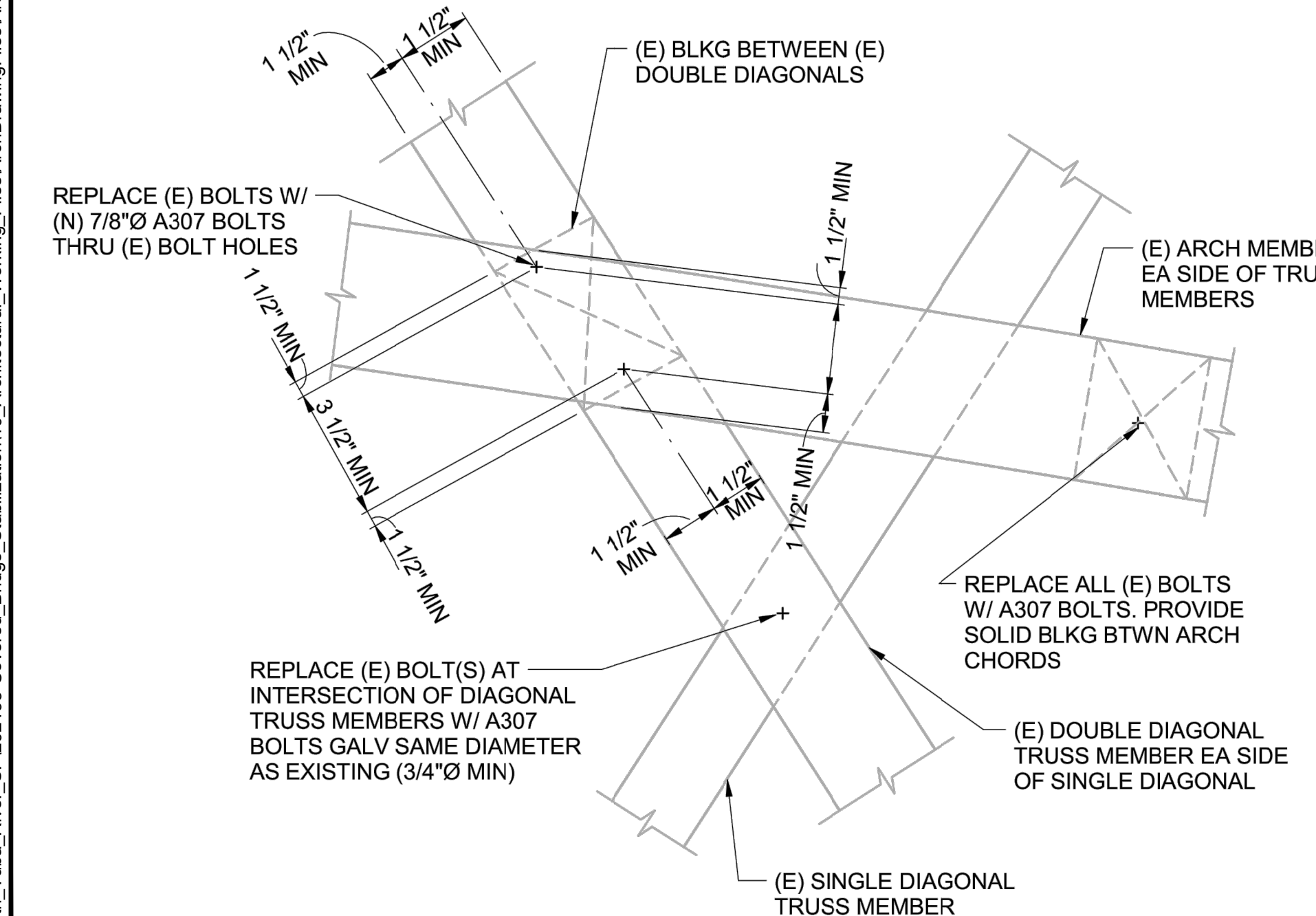
DETAIL 4 - 1" = 1'-0"



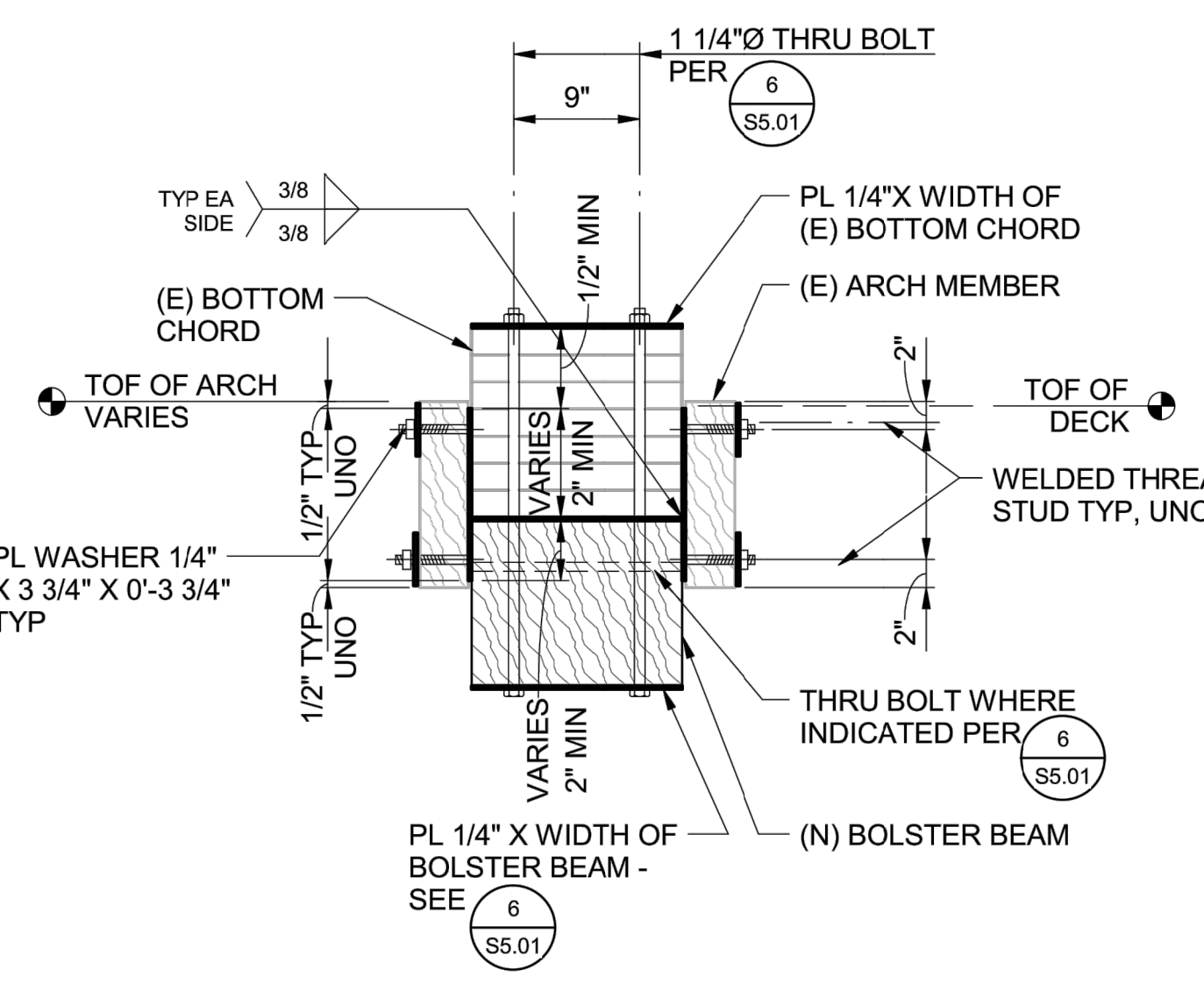
DETAIL 5 - 1" = 1'-0"



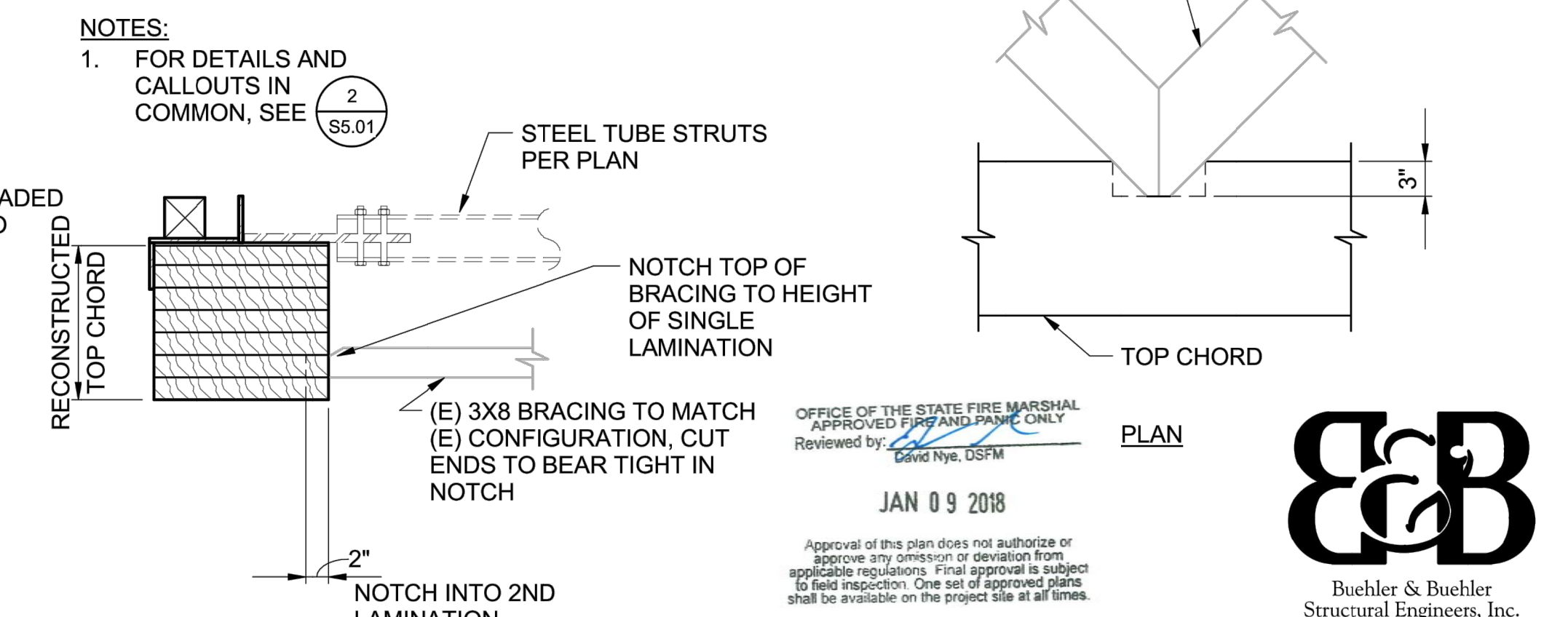
DETAIL 6 - 1" = 1'-0"



DETAIL 7 - 1" = 1'-0"



DETAIL 8 - 1" = 1'-0"



DETAIL 9 - 1" = 1'-0"

NOTES:  
 1. FOR DETAILS AND CALLOUTS IN COMMON, SEE 2

OFFICE OF THE STATE FIRE MARSHAL  
 APPROVED FOR AND PRINTED ONLY  
 Reviewed by: David Nye, DSPM  
 JAN 09 2018  
 Approval of this plan does not authorize or approve any omission or deviation from applicable regulations. Final approval is subject to field inspection. One set of approved plans shall be available on the project site at all times.



ACQUISITION & DEVELOPMENT DIVISION  
 One Capitol Mall  
 Sacramento, CA  
 95814-3229



CALIFORNIA STATE FIRE MARSHAL - APPROVED  
 Approval of this plan does not authorize or approve any omission or deviation from applicable regulations. Final approval is subject to field inspection. One set of approved plans shall be available on the project site at all times.  
 Reviewed by: Date

DPR ACCESS COMPLIANCE REVIEW  
 ACCESSIBILITY SECTION  
 CERTIFICATION # 18-015  
 Reviewed by: Date

ACCESSIBILITY COMPLIANCE AND STATE FIRE MARSHAL SIGNED ORIGINALS ARE ON FILE AT THE DEPARTMENT OF PARKS AND RECREATION, NORTHERN SERVICE CENTER

DESIGNED:  
 DRAWN:  
 CHECKED:  
 DATE: Issue Date

REVISIONS	DATE

SOUTH YUBA RIVER STATE PARK  
 HISTORIC COVERED BRIDGE REHABILITATION AND RESTORATION  
 DETAILS

DRAWING NO. 30419.019

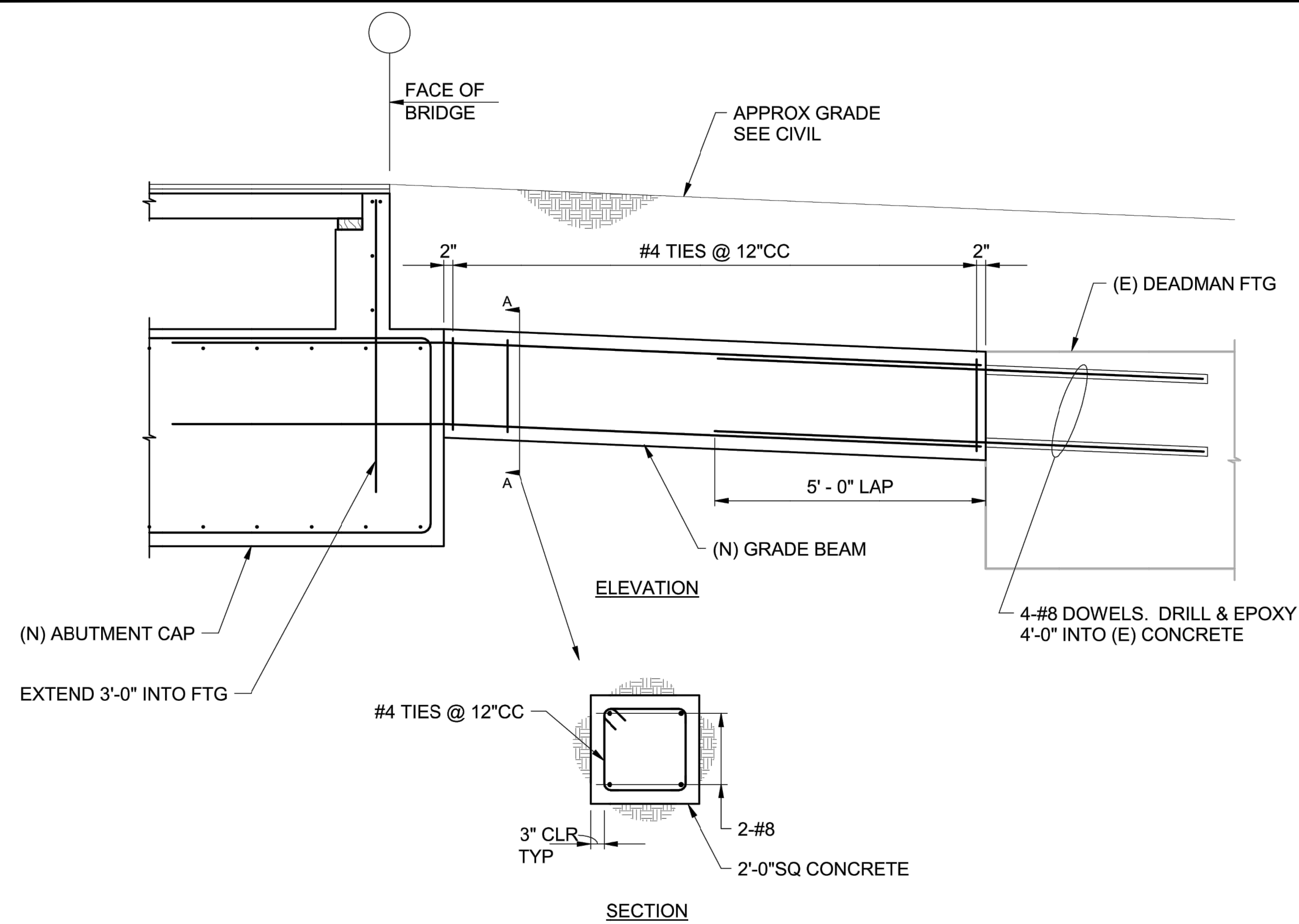
SHEET NO. S5.01

019 OF 030

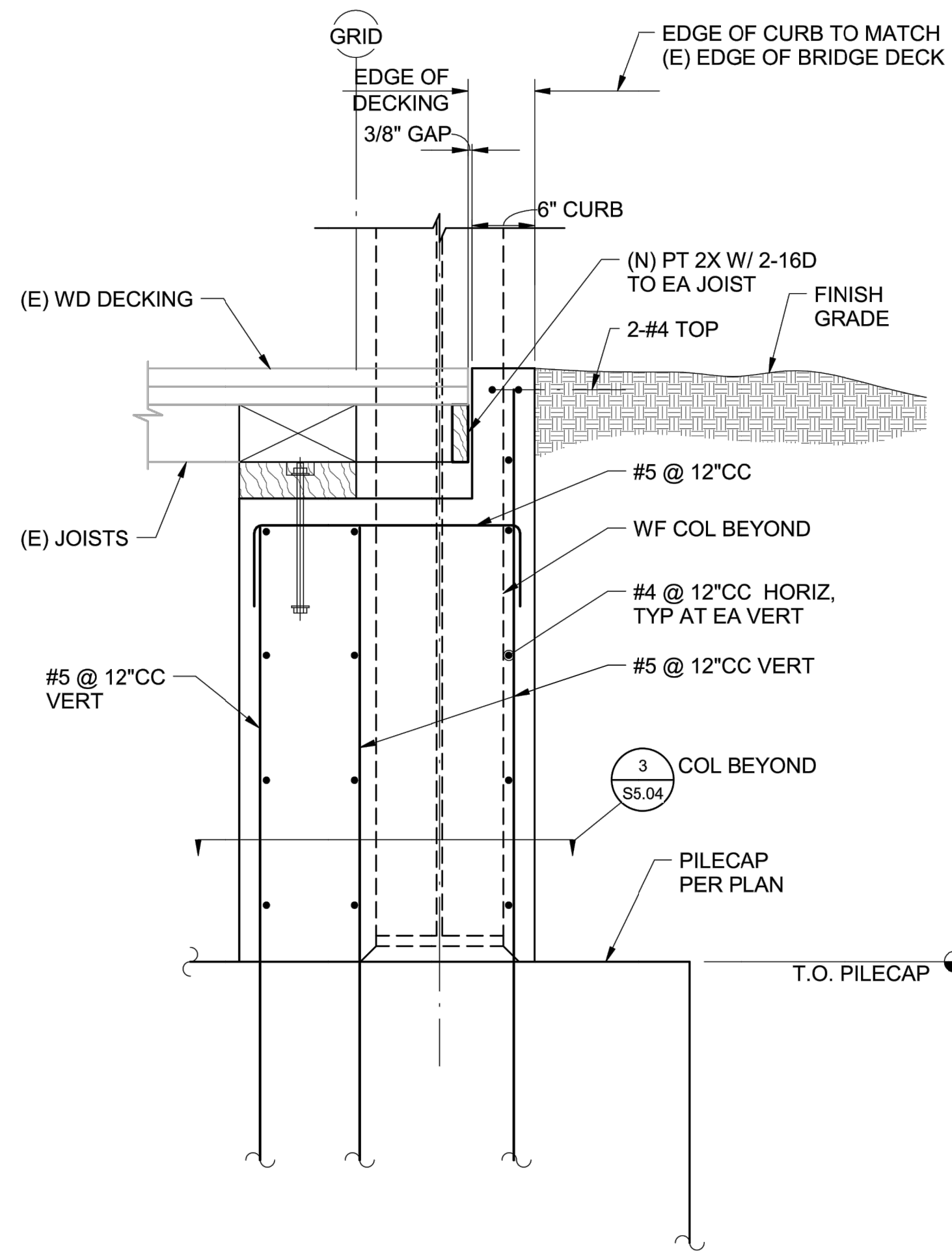




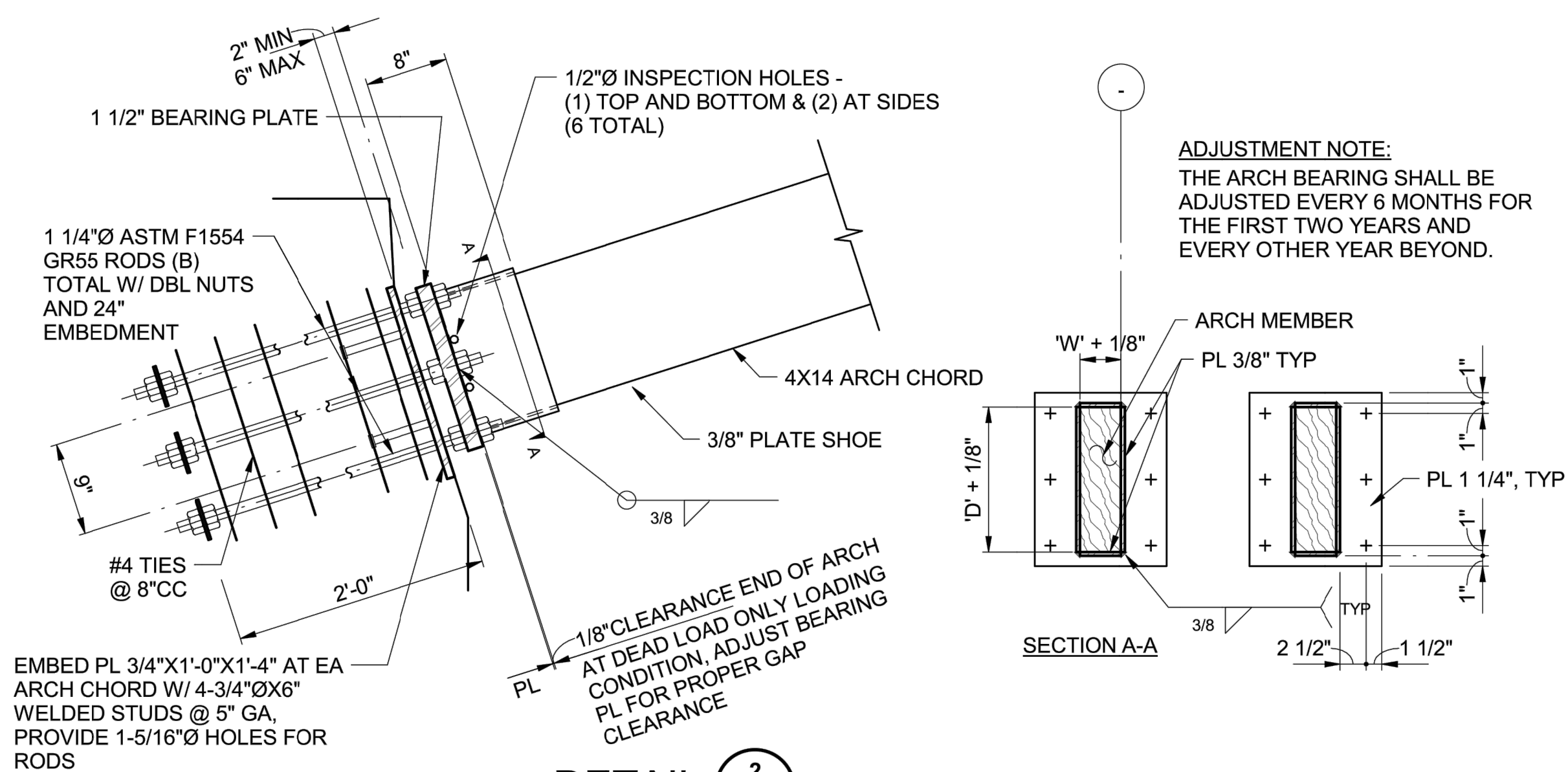




DETAIL 1 S5.03 — 1/2" = 1'-0"



DETAIL 3 S5.03 — 1" = 1'-0"



DETAIL 2 S5.03 — 1" = 1'-0"

NOTE: ALL PARTS HOT-DIP GALVANIZED AND PAINTED BLACK

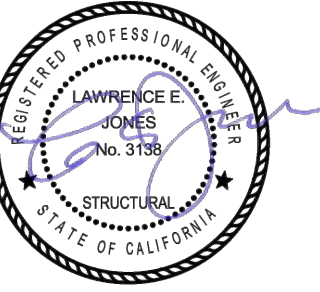
OFFICE OF THE STATE FIRE MARSHAL APPROVED SURFACING ONLY Reviewed by David Nye, DSFM

JAN 09 2018

Approval of this plan does not authorize or approve any omission or deviation from applicable regulations. Final approval is subject to field inspection. One set of approved plans shall be available on the project site at all times.



ACQUISITION & DEVELOPMENT DIVISION One Capitol Mall Sacramento, CA 95814-3229



CALIFORNIA STATE FIRE MARSHAL - APPROVED Approval of this plan does not authorize or approve any omission or deviation from applicable regulations. Final approval is subject to field inspection. One set of approved plans shall be available on the project site at all times.

Reviewed by Date

DPR ACCESS COMPLIANCE REVIEW ACCESSIBILITY SECTION CERTIFICATION # 18-025

Reviewed by Date

ACCESSIBILITY COMPLIANCE AND STATE FIRE MARSHAL SIGNED ORIGINALS ARE ON FILE AT THE DEPARTMENT OF PARKS AND RECREATION, NORTHERN SERVICE CENTER

DESIGNED: DRAWN: CHECKED: DATE: Issue Date

REVISIONS	
DATE	DATE

SOUTH YUBA RIVER STATE PARK HISTORIC COVERED BRIDGE REHABILITATION AND RESTORATION DETAILS



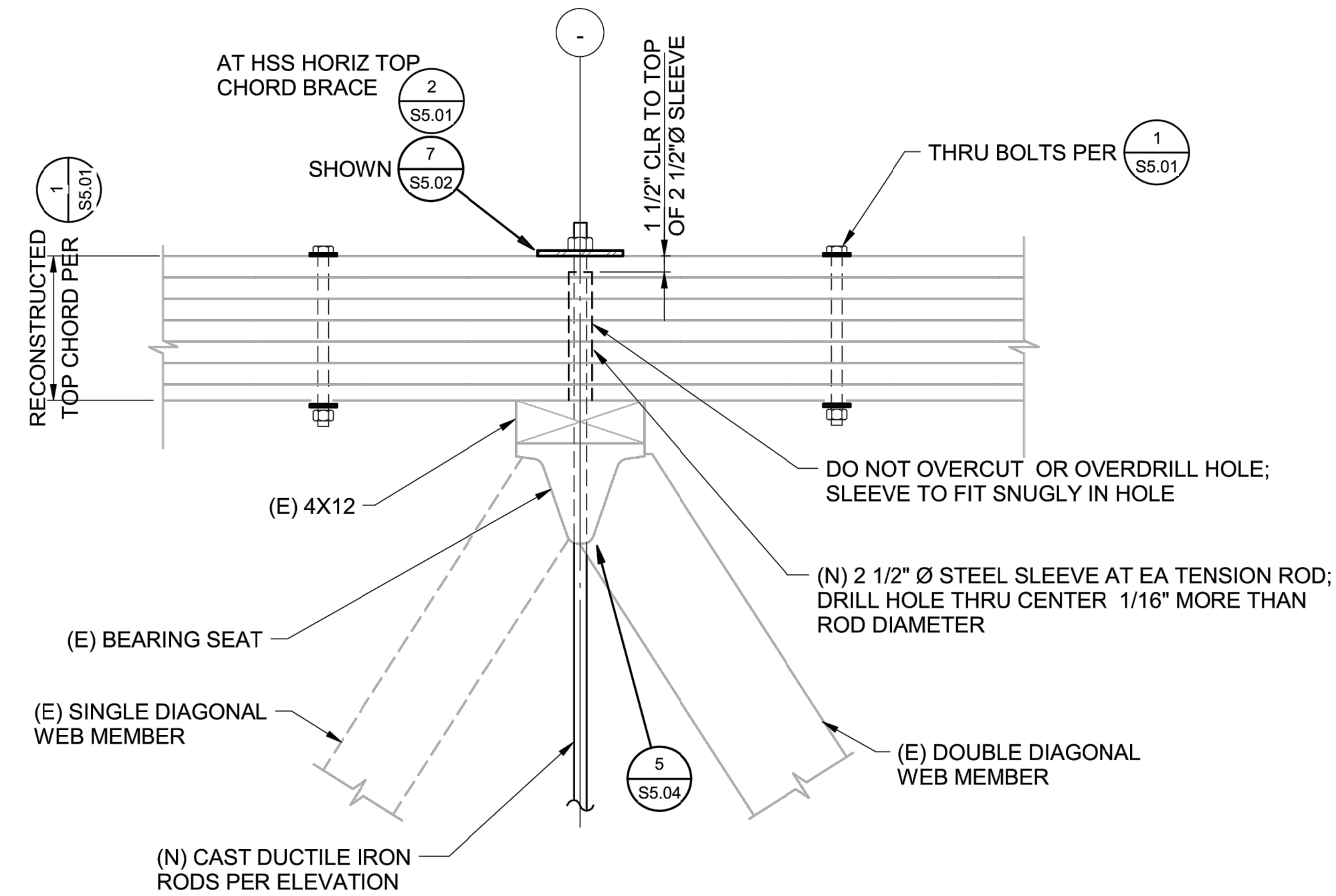
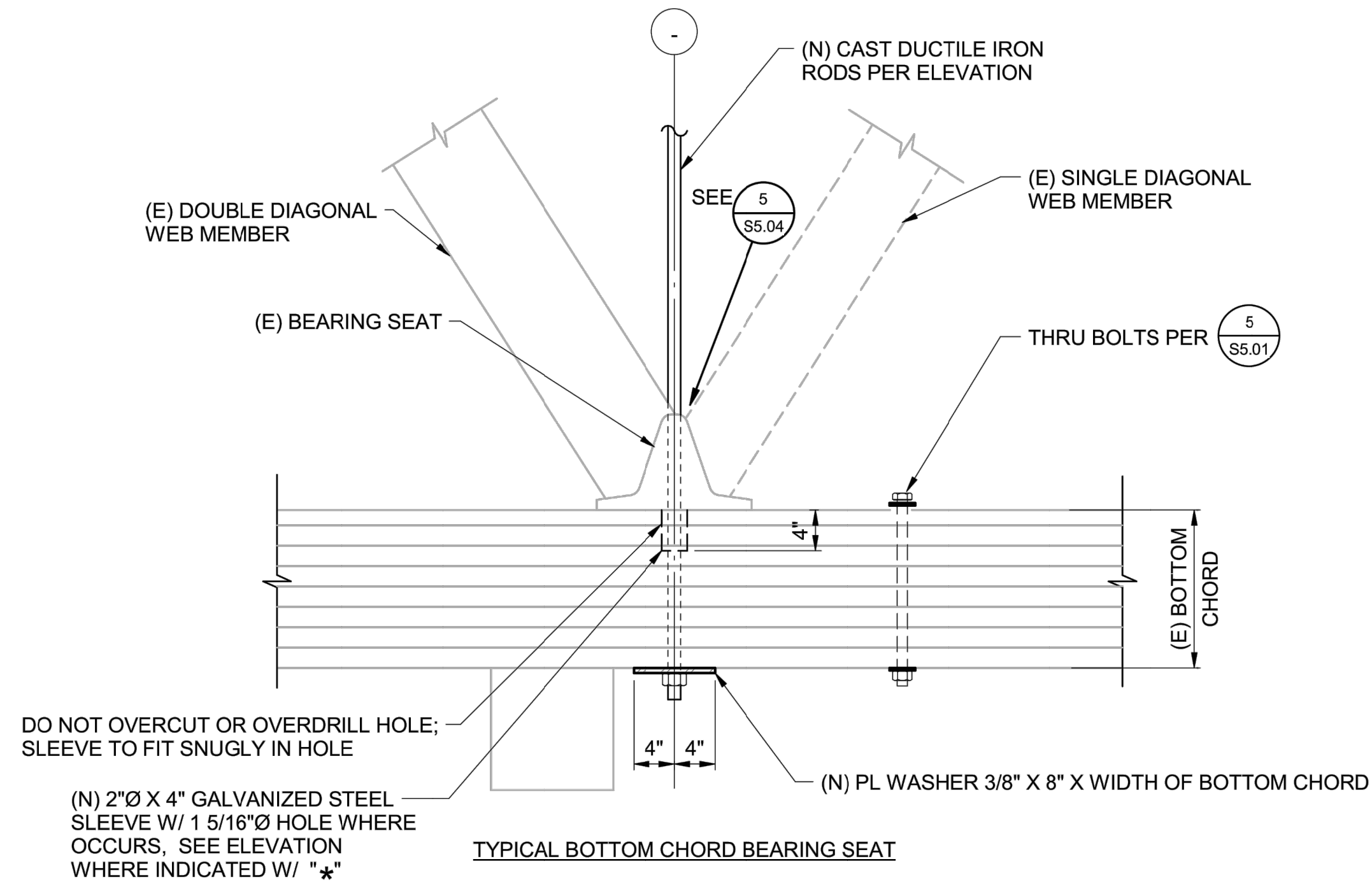
Buehler & Buehler Structural Engineers, Inc. 600 Q Street, Suite 200, Sacramento, CA 95811 tel 916.443.0303 fax 916.443.0313 Sacramento - Florence - San Francisco

DRAWING NO. 30419.021

SHEET NO. S5.03

021 OF 030

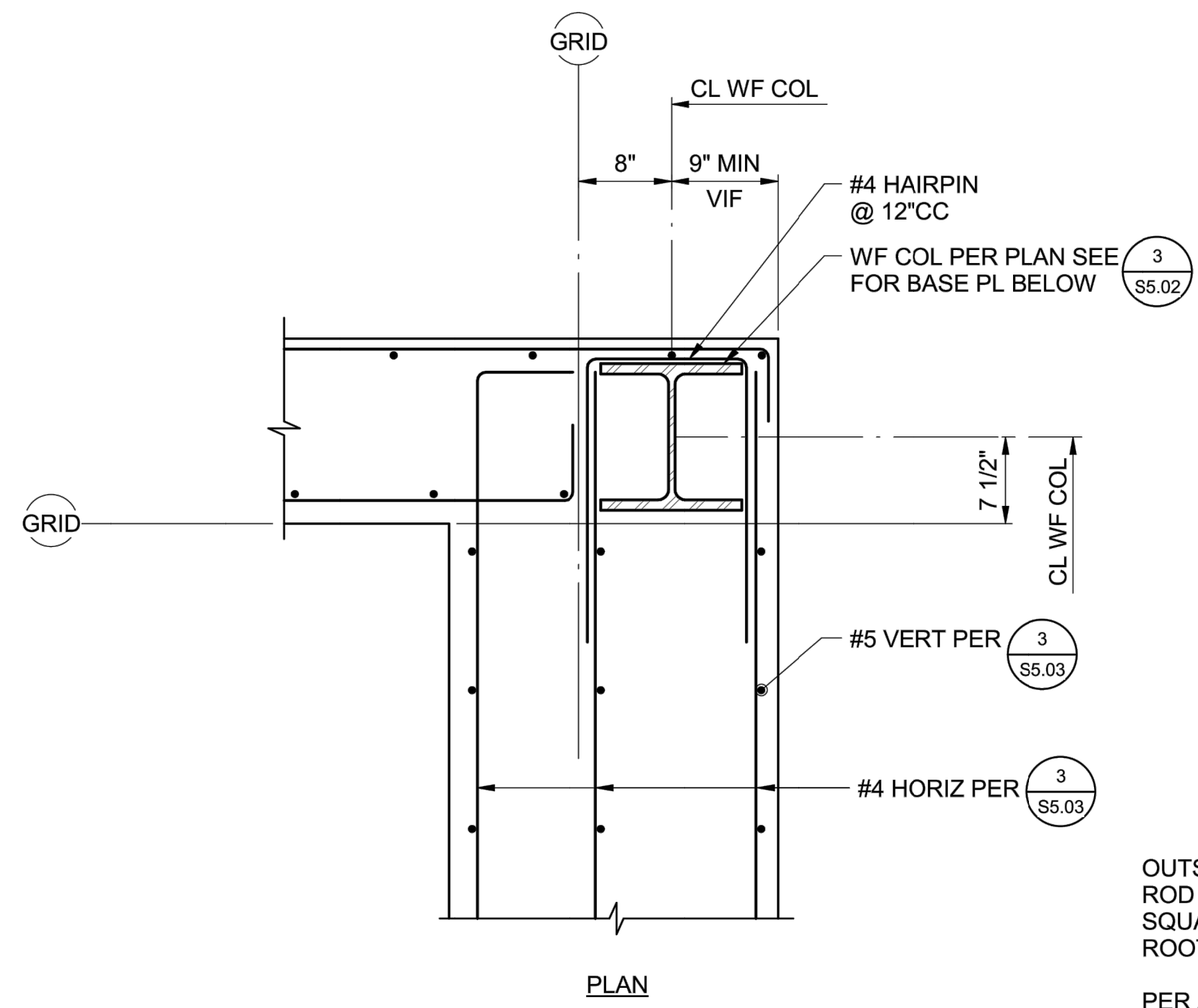




OFFICE OF THE STATE FIRE MARSHAL  
APPROVED FIRE AND PUMP ONLY  
Reviewed by: *[Signature]* DSEFM  
JAN 09 2018  
Approval of this plan does not authorize or approve any omission or deviation from applicable regulations. Final approval is subject to field inspection. One set of approved plans shall be available on the project site at all times.

DETAIL 1 (S5.04) — 1" = 1'-0"

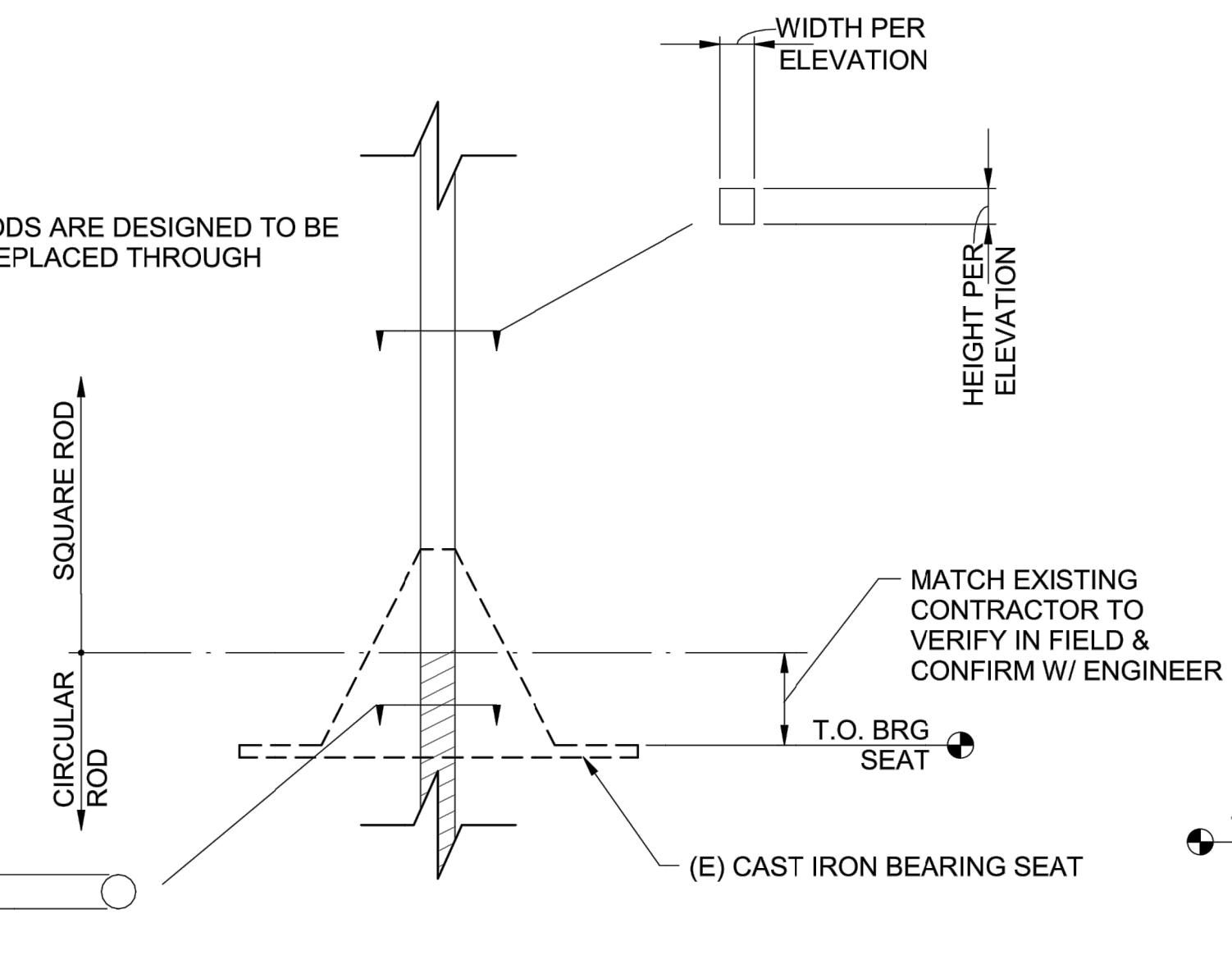
DETAIL 2 (S5.04) — 1" = 1'-0"



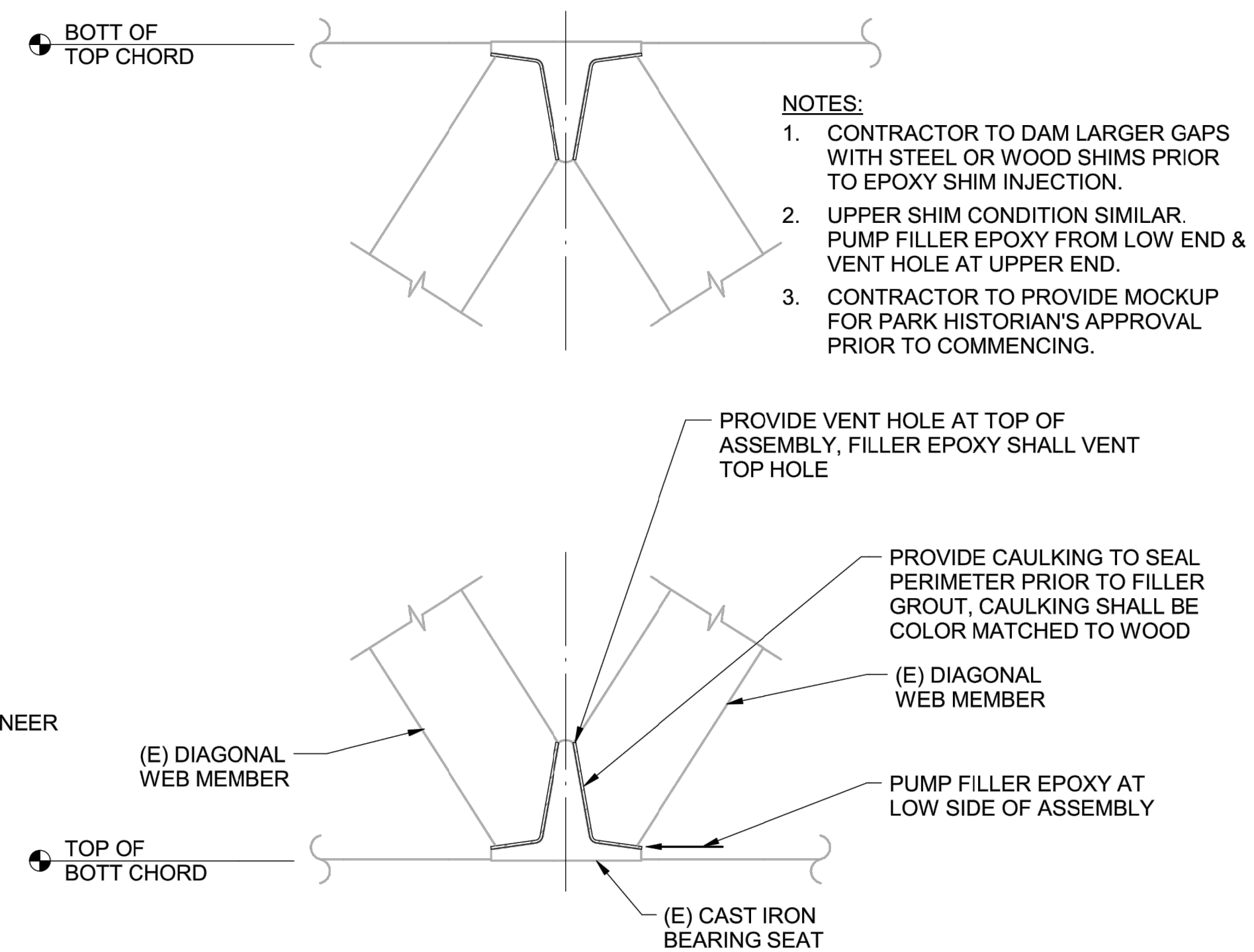
DETAIL 3 (S5.04) — 1" = 1'-0"

NOTES:  
1. NEW TENSION RODS ARE DESIGNED TO BE REMOVED AND REPLACED THROUGH THE TOP CHORD

OUTSIDE DIAMETER OF ROD = HEIGHT/WIDTH OF SQUARE ROD (THREAD ROOT = 0.865" FOR 1"Ø = 1.10" FOR 1 1/4"Ø PER AISC STANDARDS)



DETAIL 4 (S5.04) — 3" = 1'-0"



DETAIL 5 (S5.04) — 1" = 1'-0"



ACQUISITION & DEVELOPMENT DIVISION  
One Capitol Mall  
Sacramento, CA  
95814-3229



CALIFORNIA STATE FIRE MARSHAL- APPROVED  
Approval of this plan does not authorize or approve any omission or deviation from applicable regulations. Final approval is subject to field inspection. One set of approved plans shall be available on the project site at all times.  
Reviewed by: \_\_\_\_\_ Date: \_\_\_\_\_  
DPR ACCESS COMPLIANCE REVIEW ACCESSIBILITY SECTION  
CERTIFICATION # 18-025  
Reviewed by: *[Signature]* Date: *[Signature]*  
ACCESSIBILITY COMPLIANCE AND STATE FIRE MARSHAL SIGNED ORIGINALS ARE ON FILE AT THE DEPARTMENT OF PARKS AND RECREATION, NORTHERN SERVICE CENTER

DESIGNED: \_\_\_\_\_  
DRAWN: \_\_\_\_\_  
CHECKED: \_\_\_\_\_  
DATE: Issue Date

REVISIONS	
DATE	DATE

SOUTH YUBA RIVER STATE PARK  
HISTORIC COVERED BRIDGE REHABILITATION AND RESTORATION  
DETAILS



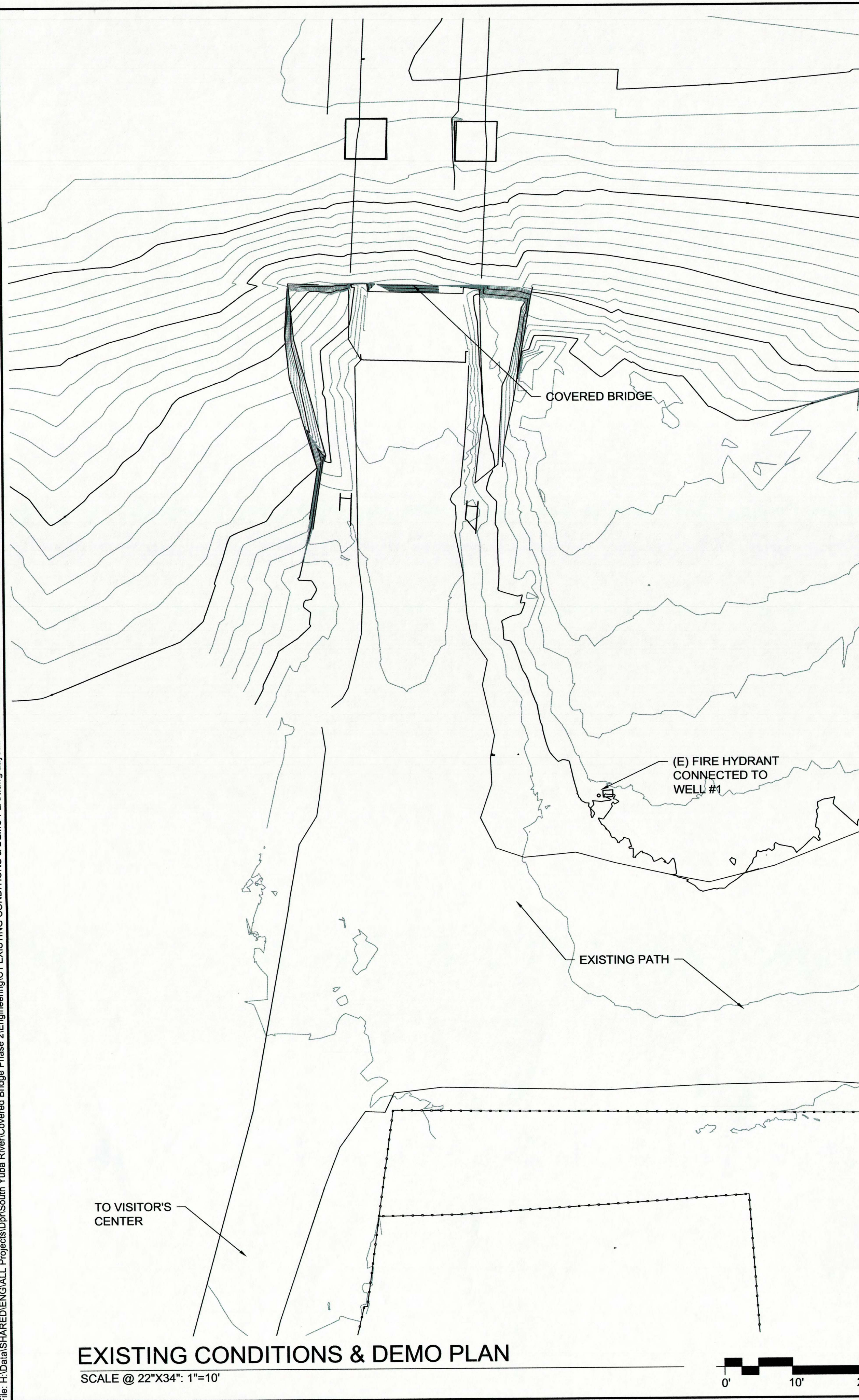
Buehler & Buehler  
Structural Engineers, Inc.  
600 Q Street, Suite 200, Sacramento, CA 95811  
tel 916.443.0323 fax 916.443.0313  
Sacramento - Phoenix - San Francisco

DRAWING NO.  
30419.022

SHEET NO.  
S5.04

022 OF 030





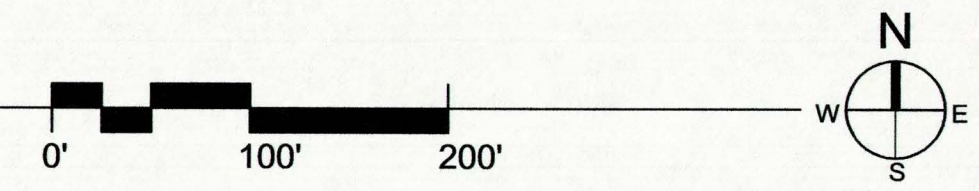
- FIRE WATER NOTES:**
1. NO STORAGE OF WATER IS PROVIDED ONSITE FOR EITHER DOMESTIC OR FIRE USE.
  2. PRESSURE IS MAINTAINED BY BOOSTER PUMP WITHIN SYSTEM.
  3. SYSTEM PRESSURE IS NORMALLY HELD BETWEEN 40 PSI AND 65 PSI.
  4. SYSTEM PRESSURE DROPS TO 20 PSI WHEN HYDRANT IS OPENED DUE TO WELLS LIMITED CAPACITY TO KEEP UP WITH FLOWS.
  5. HYDRANT FLOWS APPROXIMATELY 15 GPM DUE TO LIMITED WELL FLOW VOLUME.

- (E) FIRE HYDRANT
- (E) WELL SHED #1
- (E) COVERED BRIDGE
- (E) FIRE HYDRANT (CONNECTED TO WELL #1)
- (E) FIRE HYDRANT (CONNECTED TO WELL #1)
- (E) WELL #2 TREATMENT BUILDING
- (E) WELL HEAD #2 - SUPPLIES VISITOR CENTER AND RESTROOM, (NO HYDRANTS CONNECTED)



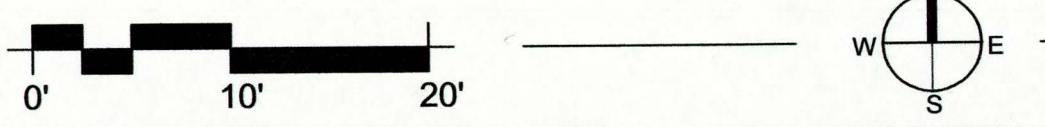
**NOTE:**  
EXISTING HYDRANTS DO NOT MEET MINIMUM FIRE FLOW REQUIREMENTS. FIRE WATER STORAGE DOES NOT MEET MINIMUM VOLUME REQUIREMENTS. SIGNATURE BY CIVIL ENGINEER DOES NOT IMPLY ACCEPTANCE OR ENDORSEMENT OF THESE LIFE-SAFETY DEFICIENCIES. THESE DEFICIENCIES SHOULD BE CORRECTED IMMEDIATELY.

**EXISTING FIRE HYDRANTS**  
SCALE @ 22"x34": 1"=100'

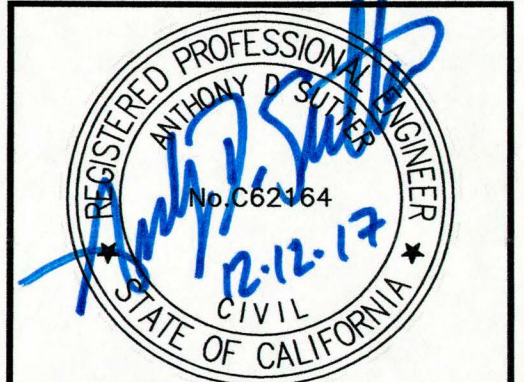


OFFICE OF THE STATE FIRE MARSHAL  
APPROVED FIRE AND PARKS ONLY  
Reviewed by: *David Nye, DSFM*  
JAN 09 2018  
Approval of this plan does not authorize or approve any omission or deviation from applicable regulations. Final approval is subject to field inspection. One set of approved plans shall be available on the project site at all times.

**EXISTING CONDITIONS & DEMO PLAN**  
SCALE @ 22"x34": 1"=10'



ACQUISITION & DEVELOPMENT DIVISION  
One Capitol Mall  
Sacramento, CA  
95814-3229



CALIFORNIA STATE FIRE MARSHAL - APPROVED  
Approval of this plan does not authorize or approve any omission or deviation from applicable regulations. Final approval is subject to field inspection. One set of approved plans shall be available on the project site at all times.  
Reviewed by: \_\_\_\_\_ Date: \_\_\_\_\_

DPR ACCESS COMPLIANCE REVIEW  
ACCESSIBILITY SECTION  
CERTIFICATION # 18-016  
Reviewed by: *ASD* Date: 1/16/18

ACCESSIBILITY COMPLIANCE AND STATE FIRE MARSHAL SIGNED ORIGINALS ARE ON FILE AT THE DEPARTMENT OF PARKS AND RECREATION, NORTHERN SERVICE CENTER.

DESIGNED: A. SUTTER  
DRAWN: STAFF  
CHECKED: K. ROSE  
DATE: 12 DEC 2017

REVISIONS	DATE

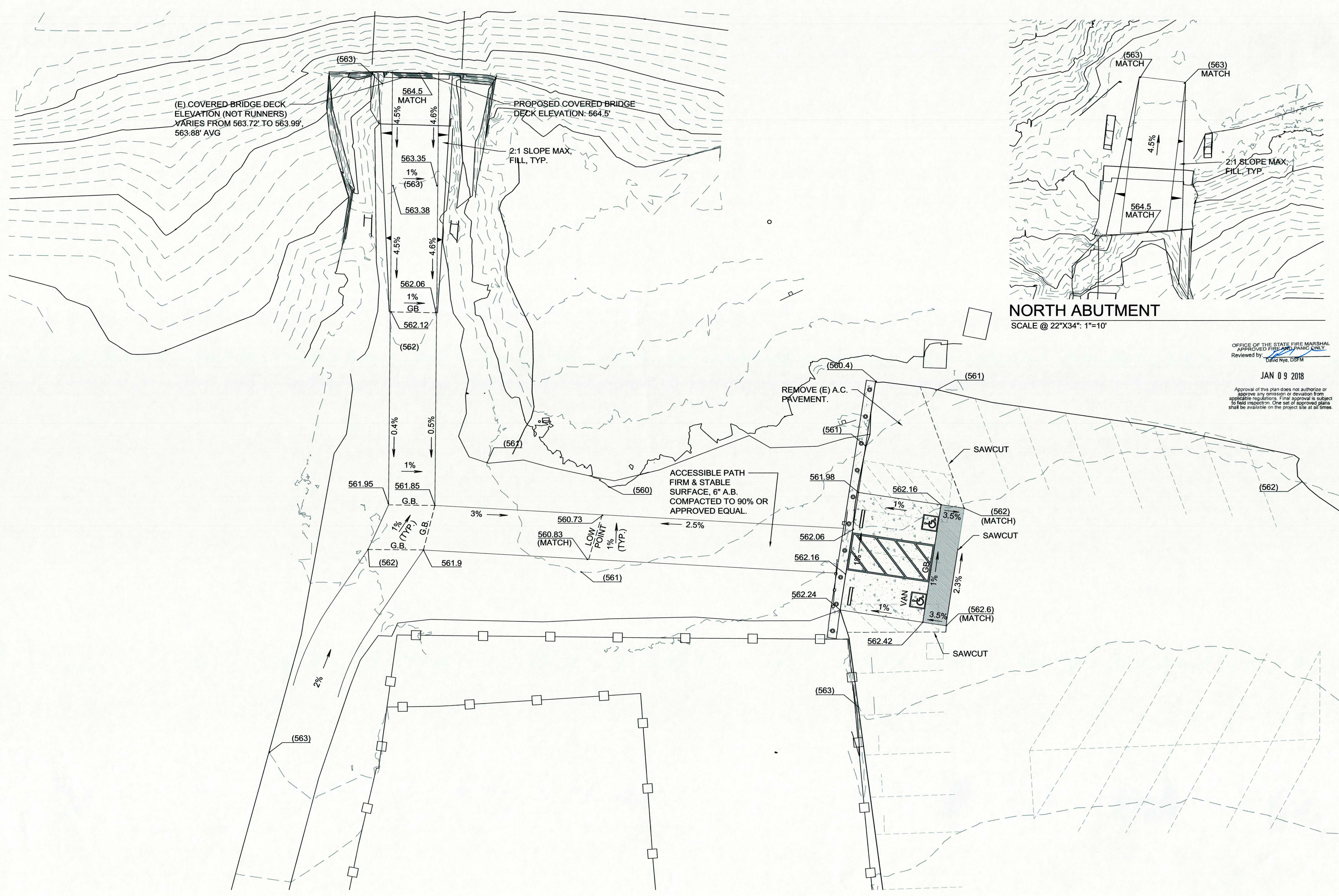
SOUTH YUBA RIVER STATE PARK  
HISTORIC COVERED BRIDGE  
**EXISTING CONDITIONS & DEMO PLAN**

DRAWING NO.  
30419.023

SHEET NO.  
**C1**

023 OF 030





(E) COVERED BRIDGE DECK ELEVATION (NOT RUNNERS) VARIES FROM 563.72' TO 563.99', 563.88' AVG

PROPOSED COVERED BRIDGE DECK ELEVATION: 564.5'

2:1 SLOPE MAX, FILL, TYP.

ACCESSIBLE PATH FIRM & STABLE SURFACE, 6" A.B. COMPACTED TO 90% OR APPROVED EQUAL.

REMOVE (E) A.C. PAVEMENT.

**NORTH ABUTMENT**

SCALE @ 22"x34": 1"=10'

OFFICE OF THE STATE FIRE MARSHAL  
APPROVED FIRE AND PANIC ONLY  
Reviewed by: *[Signature]*  
David Nye, DSFM

JAN 09 2018

Approval of this plan does not authorize or approve any omission or deviation from applicable regulations. Final approval is subject to field inspection. One set of approved plans shall be available on the project site at all times.



ACQUISITION & DEVELOPMENT DIVISION  
One Capitol Mall  
Sacramento, CA  
95814-3229



CALIFORNIA STATE FIRE MARSHAL - APPROVED  
Approval of this plan does not authorize or approve any omission or deviation from applicable regulations. Final approval is subject to field inspection. One set of approved plans shall be available on the project site at all times.  
Reviewed by: *[Signature]* Date: *[Date]*

DPR ACCESS COMPLIANCE REVIEW  
ACCESSIBILITY SECTION  
CERTIFICATION # 18-025

Reviewed by: *[Signature]* Date: 1/16/18  
ACCESSIBILITY COMPLIANCE AND STATE FIRE MARSHAL SIGNED ORIGINALS ARE ON FILE AT THE DEPARTMENT OF PARKS AND RECREATION, NORTHERN SERVICE CENTER

DESIGNED: A. SUTTER  
DRAWN: STAFF  
CHECKED: K. ROSE  
DATE: 12 DEC 2017

REVISIONS	DATE

SOUTH YUBA RIVER STATE PARK  
HISTORIC COVERED BRIDGE

**GRADING PLAN**

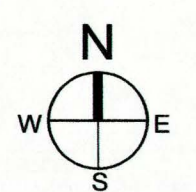
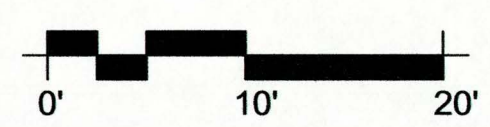
DRAWING NO.  
30419.024

SHEET NO.  
**C2**

024 OF 030

**GRADING PLAN**

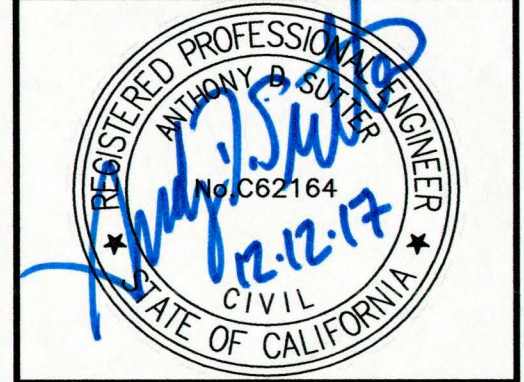
SCALE @ 22"x34": 1"=10'







ACQUISITION & DEVELOPMENT DIVISION  
One Capitol Mall  
Sacramento, CA  
95814-3229



CALIFORNIA STATE FIRE MARSHAL - APPROVED  
Approval of this plan does not authorize or approve any omission or deviation from applicable regulations. Final approval is subject to field inspection. One set of approved plans shall be available on the project site at all times.  
Reviewed by \_\_\_\_\_ Date \_\_\_\_\_

OFFICE OF THE STATE FIRE MARSHAL  
APPROVED FIRE AND PANIC CODE  
Reviewed by David Nye, DSFM

JAN 0 9 2018

Approval of this plan does not authorize or approve any omission or deviation from applicable regulations. Final approval is subject to field inspection. One set of approved plans shall be available on the project site at all times.

DPR ACCESS COMPLIANCE REVIEW  
ACCESSIBILITY SECTION  
CERTIFICATION # 18-025

Reviewed by \_\_\_\_\_ Date 1/14/18

ACCESSIBILITY COMPLIANCE AND STATE FIRE MARSHAL SIGNED ORIGINALS ARE ON FILE AT THE DEPARTMENT OF PARKS AND RECREATION, NORTHERN SERVICE CENTER

DESIGNED: A. SUTTER  
DRAWN: STAFF  
CHECKED: K. ROSE  
DATE: 12 DEC 2017

REVISIONS	
NO.	DATE

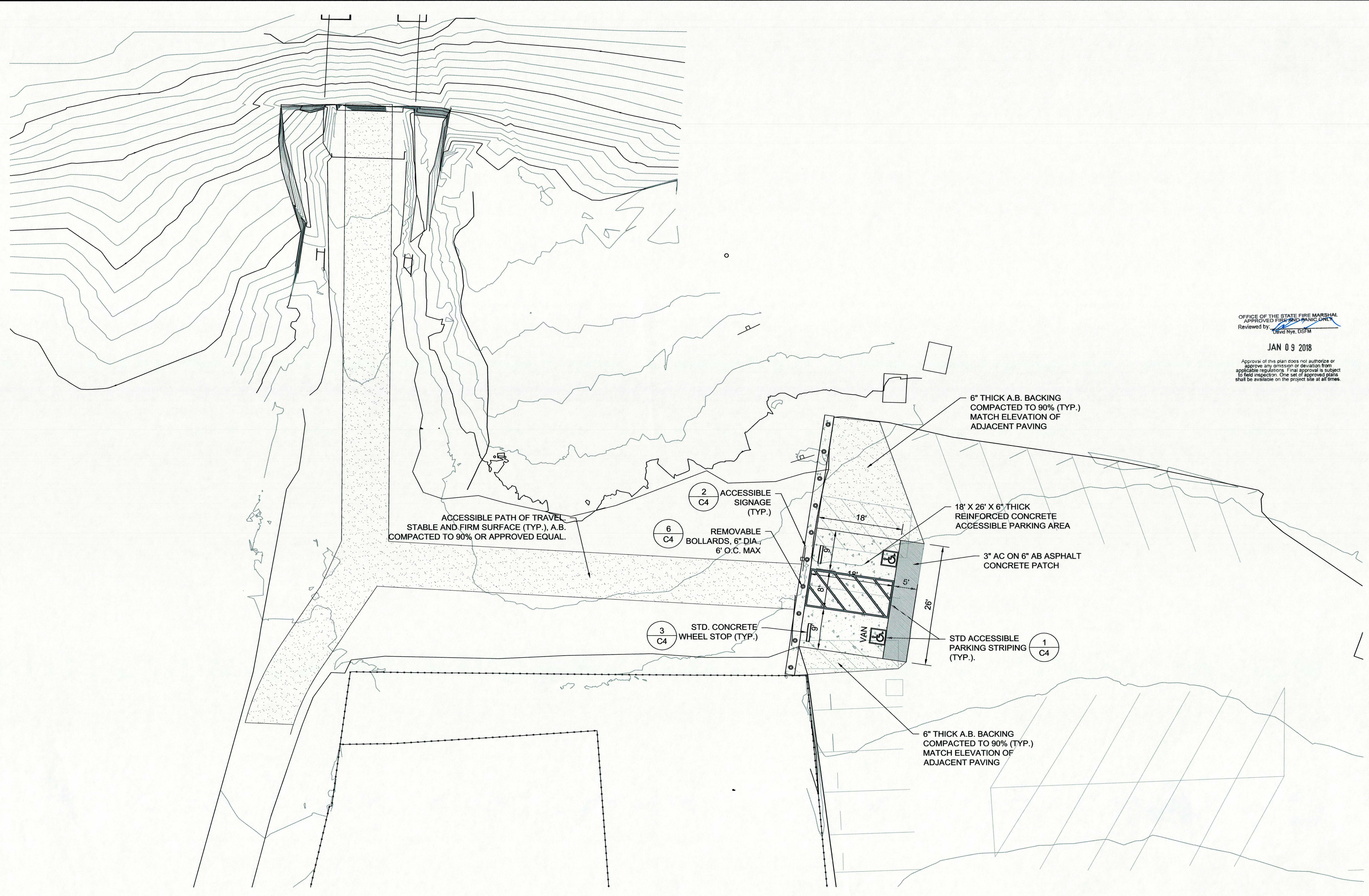
SOUTH YUBA RIVER STATE PARK  
HISTORIC COVERED BRIDGE

SITE PLAN

DRAWING NO.  
30419.025

SHEET NO.  
C3

025 OF 030



SITE PLAN  
SCALE @ 22"X34": 1"=10'

